

# Sea Turtle Identification Cards

## Kemp's Ridley *Lepidochelys kempii*

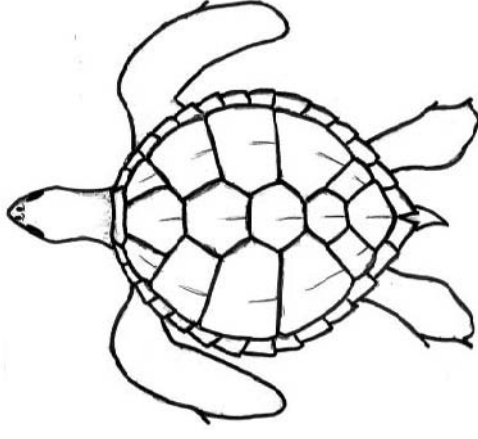
Average size and weight:  
27 inches and 85 pounds

Diet: Crabs, clams, mussels,  
shrimp as well as fish, sea urchins,  
squid and jellyfish

Range: Gulf of Mexico, Bahamas  
and western Atlantic Ocean, along  
the east coast from Florida to New  
York

Status: Critically Endangered

Fact(s): The smallest of the sea  
turtles; nests annually, laying about  
two clutches of 100 eggs each  
year



## Olive Ridley *Lepidochelys olivacea*

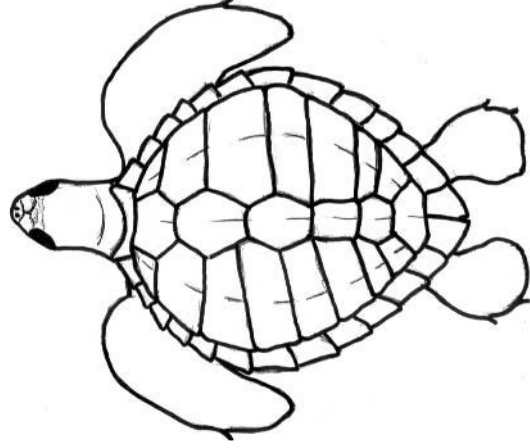
Average size and weight:  
27.5 inches and under 100 pounds

Diet: Crustaceans, mollusks and  
tunicates as well as seaweed and  
sea grasses

Range: Circumglobal- Found in tropical  
and subtropical coastal waters ; usually  
seen in large flotillas travelling between  
breeding and feeding grounds in the  
Eastern Pacific and Indian Ocean

Status: Endangered

Fact(s): Known to participate in  
arribadas and reproduce annually



## Green *Chelonia mydas*

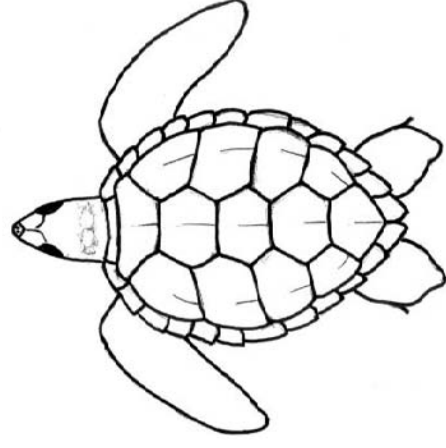
Average size and weight:  
36-40 inches and 300 pounds (largest  
was five feet and 871 pounds)

Diet: Strict herbivores, eating sea  
grasses and algae; juveniles eat worms  
and young sea creatures as well as  
grasses and algae

Range: Circumglobal in tropical and  
subtropical waters, near continental  
coasts and around islands

Status: Endangered (C.E. in Mediterranean)

Fact(s): Named for the color of its fat



## Leatherback *Dermochelys coriacea*

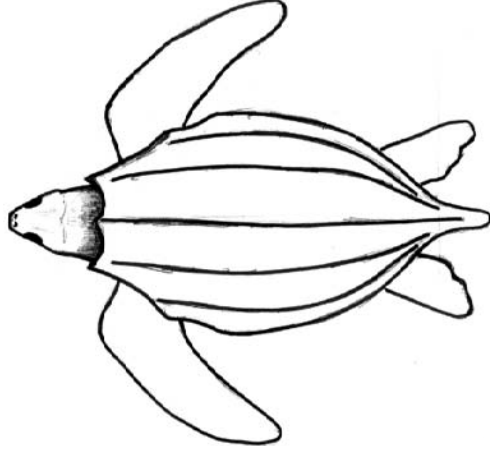
Average size and weight:  
Up to eight feet and 1,300 pounds  
(Largest was 10 feet and 2,019 pounds)

Diet: Jellyfish

Range: Circumglobal - ranging in most of the world's oceans, nests on beaches of the Atlantic, Indian and Pacific

Status: Critically Endangered

Fact(s): The largest, deepest diving and furthest traveled of all sea turtles; lack a hard shell but have a layer of tough, rubbery skin with tiny bone plates



## Hawksbill *Eretmochelys imbricata*

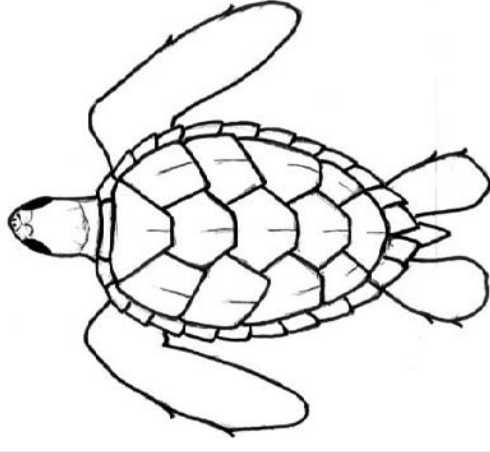
Average size and weight:  
36 inches and 150 pounds

Diet: Sponges, anemones, squid and shrimp

Range: Circumglobal - the most tropical of all sea turtles; most common near coral reefs in the Atlantic and Indo-Pacific

Status: Critically Endangered

Fact(s): Were hunted to endangerment due to the desire for their shell; traditional tortoise shell products are made from the shell of these turtles



## Flatback *Natator depressus*

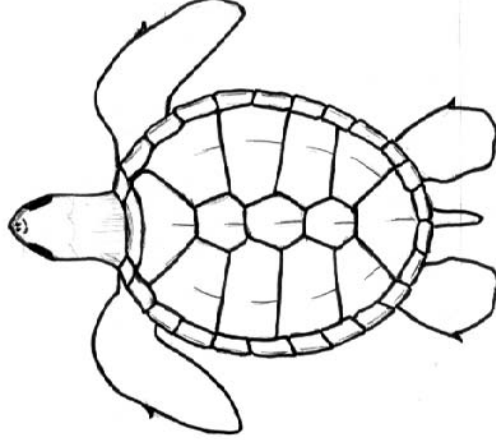
Average size and weight:  
39 inches and 150 pounds

Diet: Sea cucumbers, mollusks, prawns, seaweed

Range: North coast of Australia and gulf of Papua New Guinea

Status: Data Deficient

Fact(s): The most poorly understood of all sea turtles because of its limited range; Will only lay approximately 50 large eggs up to four times a season



## Loggerhead *Caretta caretta*

Average size and weight:  
41 inches and 350 pounds

Diet: Primarily carnivorous feeding on crustaceans, horseshoe crabs, clams, mussels and shrimp

Range: Circumglobal - ranging in most of the world's oceans; usually visible on continental shelves, in bays and estuaries and lagoons in temperate, subtropical and tropical waters

Status: Endangered

Fact(s): Named for their very large head; also the most numerous of the US Atlantic Coast sea turtles

