

Name: \_\_\_\_\_

### Animal Cell Coloring

Cell Membrane (light brown)

Cytoplasm (white)

Nucleoplasm (pink)

Nuclear Membrane(dark brown)

Ribosome (red)

Nucleolus (black)

Golgi Apparatus (pink)

Cilia (yellow)

Rough Endoplasmic Reticulum (dark blue)

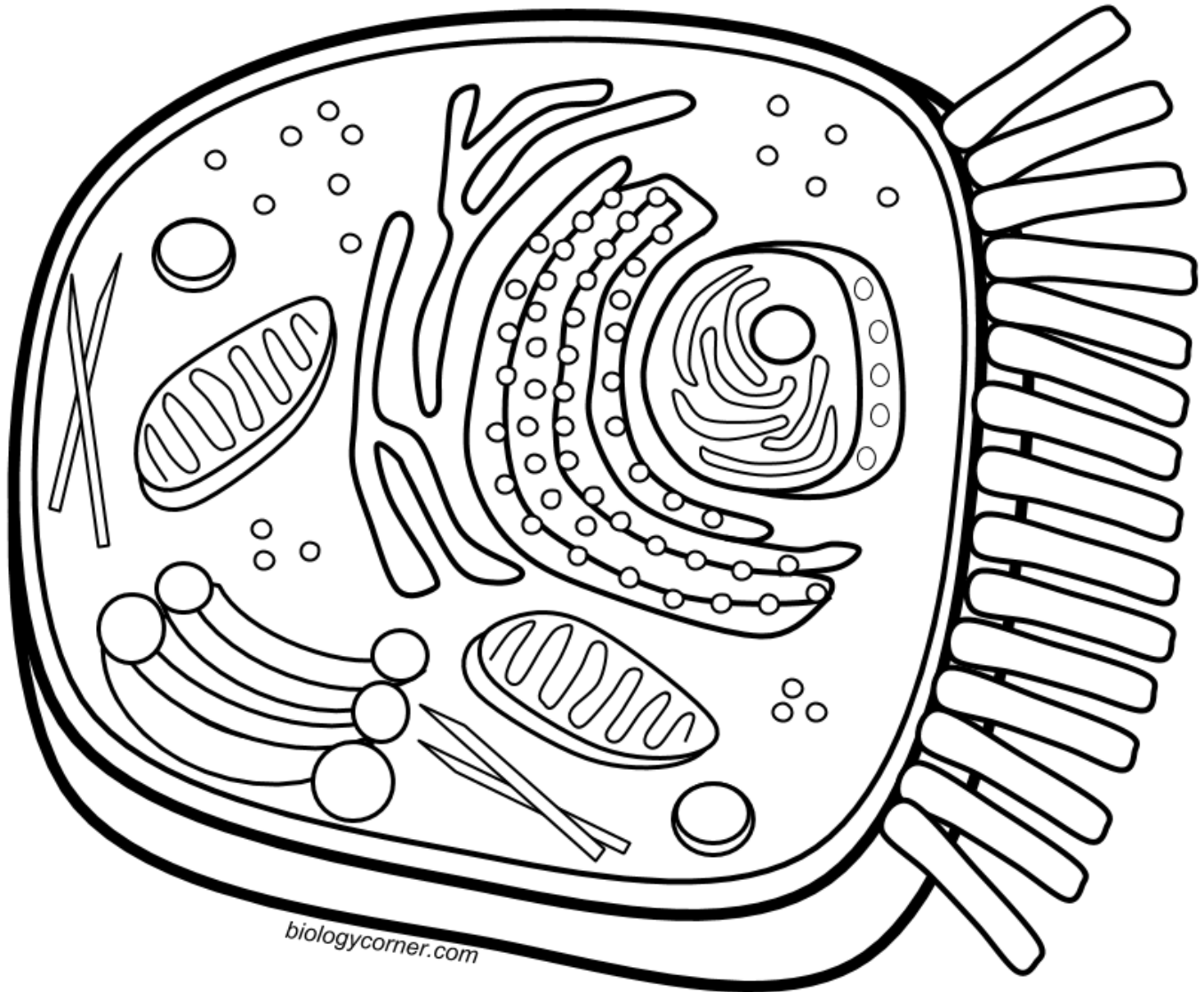
Smooth Endoplasmic Reticulum( light blue)

Mitochondria (orange)

Lysosome (purple)

Microtubules (green)

Chromosomes (dark green)



Briefly describe the function of the cell parts.

1. Cell membrane \_\_\_\_\_
2. Endoplasmic Reticulum \_\_\_\_\_
3. Ribosome \_\_\_\_\_
4. Golgi Apparatus \_\_\_\_\_
5. Lysosome \_\_\_\_\_
6. Microtubule \_\_\_\_\_
7. Mitochondria \_\_\_\_\_
8. Nucleus \_\_\_\_\_